

Pipe Insulators & Clamps

Pipe Insulators



- Sizes: 1/2", 3/4", 1" CTS Tubing
- Isolates Supply Tubing from Wood or Metal Studs
- Split/Hinge Designed for Installation on Pre-Piped Jobs
- 1 3/8" Hole Required for All Sizes

✓ To Submit	Part No.	Description	Inner Pack Qty
	BR10943	1/2" CTS Pipe Insulator	25
	BR10944	3/4" CTS Pipe Insulator	25
	BR10945	1" CTS Pipe Insulator	25

Metal Stud Insulators



- Sizes: 3/8", 1/2", 3/4", 1" CTS Tubing
- For use on Metal Studs 20 Gauge or Lighter
- Isolates Supply Tubing from Metal Studs
- Each Insulator Fits the Same 1 11/32" Diameter Metal Stud Hole
- Offset Hole in Insulator Helps Maintain Tube Alignment on 1/2" & 3/4" Size

✓ To Submit	Part No.	Description	Inner Pack Qty
	BR10963	3/8 - 3/4" CTS Metal Stud Insulator	50
	BR10964	1/2" CTS Metal Stud Insulator	100
	BR10965	3/4" CTS Metal Stud Insulator	100
	BR10966	1" CTS Metal Stud Insulator	50

All dimensions listed are nominal. HD Supply_{sm} reserves the right to change or modify products without prior notification and is not responsible for the use of superseded or voided specification sheets.

Contact your HD Supply sales representative for more information.
<http://plumbing-hvac.hdsupply.com>



Pipe Insulators & Clamps

Full Clamps



- Sizes: 1/2", 3/4", 1" CTS.
- Supports Copper, PEX, Polybutylene and CPVC Tubing.
- Isolates Supply Tubing from Wood Framing.
- With Preloaded Nail.

✓ To Submit	Part No.	Description	Inner Pack Qty
	BR10928	1/2" CTS Full Pipe Clamp w/Nail	100
	BR10929	3/4" CTS Full Pipe Clamp w/Nail	50
	BR10930	1" CTS Full Pipe Clamp w/Nail	25

Half Clamps



- Sizes: 1/2", 3/4", 1" CTS.
- Supports Copper, PEX, Polybutylene Tubing
- Not Recommended for CPVC.
- With Preloaded Nail.

✓ To Submit	Part No.	Description	Inner Pack Qty
	BR10922	1/2" CTS Half Pipe Clamp w/Nail	50
	BR10923	3/4" CTS Half Pipe Clamp w/Nail	50
	BR10924	1" CTS Half Pipe Clamp w/Nail	50

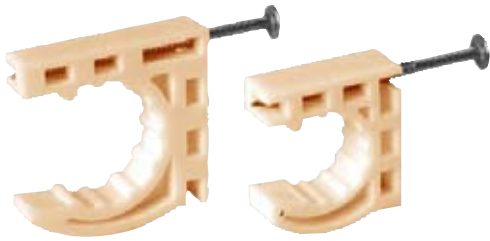
All dimensions listed are nominal. HD Supply_{sm} reserves the right to change or modify products without prior notification and is not responsible for the use of superseded or voided specification sheets.

Contact your HD Supply sales representative for more information.
<http://plumbing-hvac.hdsupply.com>



Pipe Insulators & Clamps

Multi Half Pipe Clamps



- Sizes: 1/2", 3/4", 1" CTS.
- Supports Copper, PEX, Polybutylene and CPVC Tubing.
- Installs 3 Ways.
- With Preloaded Nail.
- Silence Gap Greatly Reduces Chances for Noise Common to Overly Restrictive Clamps.

✓ To Submit	Part No.	Description	Inner Pack Qty
	BR10925	1/2" CTS Multi Half Pipe Clamp w/Nail	50
	BR10926	3/4" CTS Multi Half Pipe Clamp w/Nail	50
	BR10927	1" CTS Multi Half Pipe Clamp w/Nail	50

2-Hole Pipe Clamps



- Sizes: 1/2", 3/4", 1", 1 1/4", 1 1/2", 2" CTS.
- Supports Copper, PEX, Polybutylene and CPVC Tubing.
- Isolates Supply Tubing from Wood Framing.

✓ To Submit	Part No.	Description	Inner Pack Qty
	BR10931	1/2" CTS Insulating 2-Hole Pipe Clamp	100
	BR10932	3/4" CTS 2-Hole Insulating Pipe Clamp	100
	BR10933	1" CTS 2-Hole Insulating Pipe Clamp	50
	BR10934	1 1/4" CTS 2-Hole Insulating Pipe Clamp	50
	BR10935	1 1/2" CTS 2-Hole Insulating Pipe Clamp	25
	BR10936	2" CTS 2-Hole Insulating Pipe Clamp	25

All dimensions listed are nominal. HD Supply_{sm} reserves the right to change or modify products without prior notification and is not responsible for the use of superseded or voided specification sheets.

Contact your HD Supply sales representative for more information.
<http://plumbing-hvac.hdsupply.com>



Pipe Insulators & Clamps

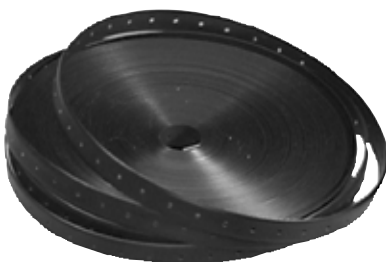
Insulating Suspension Clamps



- Sizes: 1/2", 3/4", 1", 1 1/4", 1 1/2", 2" CTS.
- Supports Copper, PEX, Polybutylene and CPVC Tubing.
- Isolates Supply Tubing from Wood Framing.
- Chemically Compatible with CPVC.

✓ To Submit	Part No.	Description	Inner Pack Qty
	BR10937	1/2" CTS 2-Hole Insulating Suspension Clamp	50
	BR10938	3/4" CTS 2-Hole Insulating Suspension Clamp	50
	BR10939	1" CTS 2-Hole Insulating Suspension Clamp	50
	BR10940	1 1/4" CTS 2-Hole Insulating Suspension Clamp	50
	BR10941	1 1/2" CTS 2-Hole Insulating Suspension Clamp	25
	BR10942	2" CTS 2-Hole Insulating Suspension Clamp	25

Hanger Strapping



- 3/4" wide, .050 thick with 1/8" holes 3/4" apart. 125lb.
- Flexible, non-conductive, non-abrasive.
- Can be cut with shears, snips or utility knife.

✓ To Submit	Part No.	Description	Inner Pack Qty
	BR10962	100 ft Roll Plastic Hanger Strap	1

All dimensions listed are nominal. HD Supply_{sm} reserves the right to change or modify products without prior notification and is not responsible for the use of superseded or voided specification sheets.

Contact your HD Supply sales representative for more information.
<http://plumbing-hvac.hdsupply.com>

